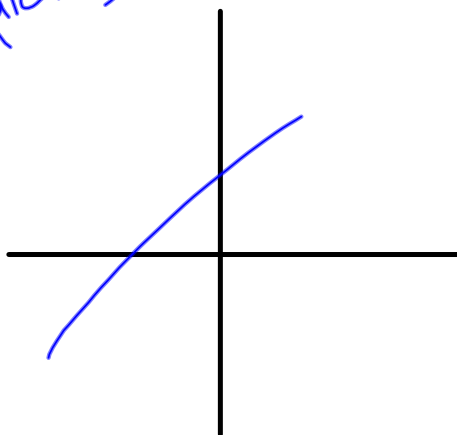


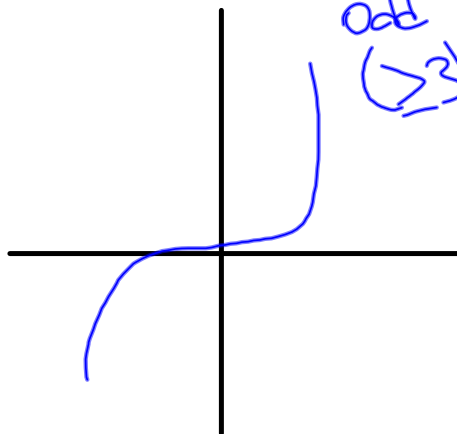
4.3] multiplicity
1



multiplicity
even (≥ 2)



multiplicity
odd
(≥ 3)



Sketch a graph of

degree = 8

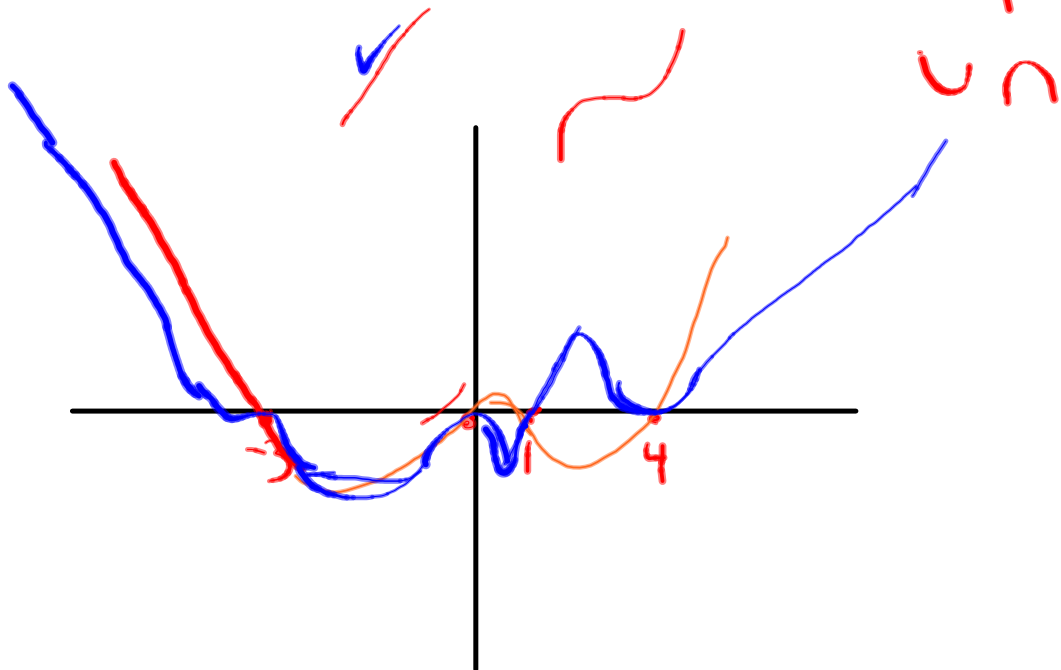
$$y = x^2(x-1)(x+3)^3(x-4)^2$$

$x=0$

$x=1$

$x=-3$

$x=4$



Sketch a graph of

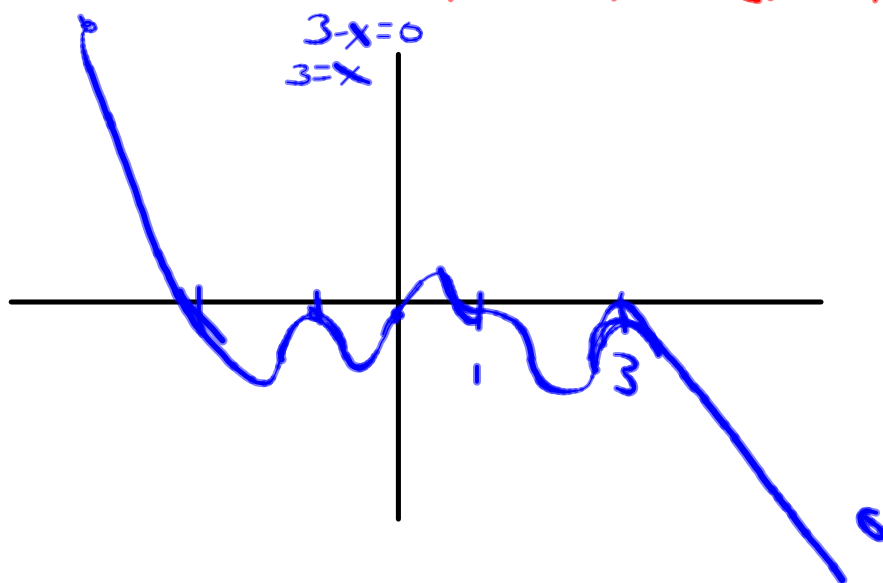
$$y = (x-4)^2(x-1)^7(x+1)^3$$

sketch a graph of

$$y = (x-2)(x-1)(x)(x+1)(x+2)$$

Sketch a graph of

$$y = \overset{+}{(3-x)^2} \overset{-}{(1-x)^3} \overset{+}{(x)} \overset{+}{(1+x)^2} \overset{+}{(2.5+x)}$$



4.3/8

